

CHARGING



insert battery



charge in progress



charge complete

WARNINGS

- MoMe® Kardia is not intended for use as an emergency medical response system. Call 911 if you feel you are having a medical emergency.
- The MoMe® Kardia Device is not defibrillation-proof. Remove MoMe® Kardia Device and disconnect patient leads before external defibrillation.
- Do not service or repair any components of the MoMe® Kardia system. Removal of or tampering with any component may alter device performance and cause device malfunction or failure.
- The MoMe® Kardia contains a cellphone. If you have an implantable device, follow your implantable device manufacturer's recommendations for use with a cellphone.

CAUTIONS

- Electrodes may cause skin irritation. Follow your physician's instructions on what to do if skin irritation occurs.
- Use only with the supplied battery packs, charging dock, and wall adapter
- MoMe® Kardia is not waterproof:
 - Do not get device wet. Never bathe, shower, or swim while wearing the MoMe® Kardia Device (while bathing or swimming, store MoMe® Kardia equipment in a safe, dry location)
 - Protect all MoMe® Kardia parts from water, liquids or moisture which will damage equipment and affect system operation;
 - Do not immerse any part of the MoMe® Kardia system in water or fluids. Do not spray device with cleaners or other liquids;
- Do not drop or subject MoMe® Kardia parts to extreme physical shock.
- Keep the system out of reach of children and pets.
- The MoMe® Kardia provided for use in the U.S. will not transmit recorded data if you travel outside of the U.S.



MoMe® Kardia Patient Quick Reference Guide 10121 rC



Scan for complete Patient Guides and Helpful Videos



English
Guide



Spanish
Guide



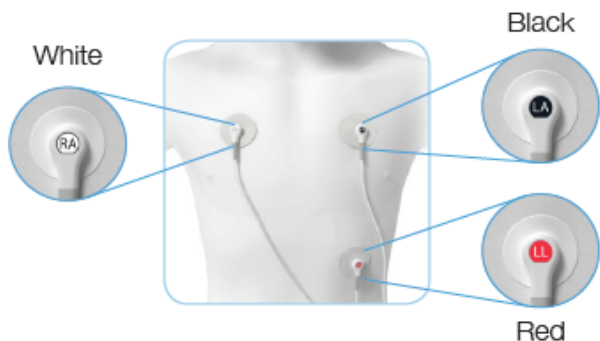
Welcome to MoMe



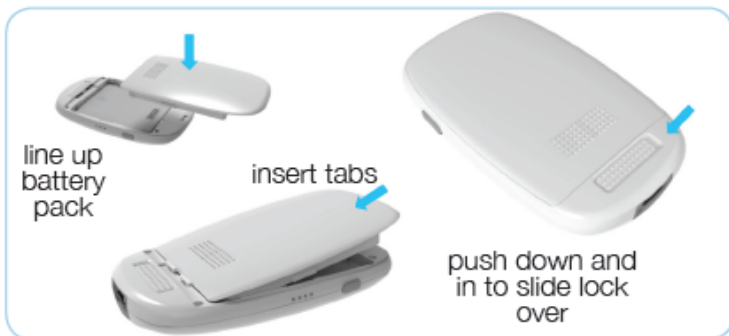
Battery
Removal

Your physician prescribed you a MoMe® Kardia device. It is important you wear the device according to your doctor's instructions.

LEADSET



ATTACHMENTS



Slide device into Belt Clip to lock into position



Connector keys in one way as shown

Attach the leadset as shown above.

VOLUME



Volume Up



Volume Down



Vibrate



RECORD



Press and hold the Record Button for 3 seconds to record

NOTIFICATIONS



Replace the battery with a fully charged one when the BATT LOW notification is displayed